

**ISSUE:** Summer 2025

*Your magazine from Campbell Park Community Council*

# Homeground

WILLEN

WINTERHILL

OLDBROOK

FISHERMEAD

SPRINGFIELD

NEWLANDS

WOOLSTONE

**Construction of the  
CPCC Community  
Hub is completed**  
More on Page 3



Pictured are Clerk to Council – Dominic Warner, Architect – Nick Stenton  
and Chair of CPCC – Cllr Brian Greenwood



# MEET THE COUNCILLORS

## WILLEN



**VAL DIXON**  
07799 864 644  
val.dixon  
@campbell-park.gov.uk



**BILL MACHARIA**  
bill.macharia  
@campbell-park.gov.uk

## OLDBROOK



**KATHERINE KENT**  
07821 696 895  
katherine.kent  
@campbell-park.gov.uk



**RICHARD MCCAFFERTY**  
richard.mccafferty  
@campbell-park.gov.uk



**CHAIR OF COUNCIL**  
**BRIAN GREENWOOD**  
07956 384 000  
brian.greenwood  
@campbell-park.gov.uk



**JOHN HEARNshaw**  
07442 249 624  
john.hearnshaw  
@campbell-park.gov.uk

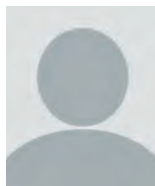
## WOOLSTONE



**JOHN HOWARD**  
john.howard  
@campbell-park.gov.uk



**DAVID PAFFORD**  
david.pafford  
@campbell-park.gov.uk



VACANCY  
This could be you!



**BRIAN BARTON**  
07779 261 364  
brian.barton  
@campbell-park.gov.uk



**VICE CHAIR**  
**RAY GOLDING**  
07540 283 157  
ray.golding  
@campbell-park.gov.uk

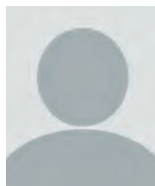
## SPRINGFIELD



**LOIS ADURA**  
lois.adura  
@campbell-park.gov.uk

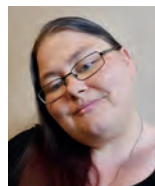


**KARL KAVARANA**  
07702 026 414  
karl.kavarana  
@campbell-park.gov.uk



**HASSAN KAKEI**  
hassan.kakei  
@campbell-park.gov.uk

## FISHERMEAD



**FRANKIE MANGAN**  
frankie.mangan  
@campbell-park.gov.uk



**PENNY HALTON-DAVIS**  
penelope.halton-davis  
@campbell-park.gov.uk



**DARRON KENDRICK**  
07513 997 702  
darron.kendrick  
@campbell-park.gov.uk

## HOW TO CONTACT US

T: 01908 608559

E: [admin@campbell-park.gov.uk](mailto:admin@campbell-park.gov.uk)

W: [www.campbell-park.gov.uk](http://www.campbell-park.gov.uk)

Please note that the Council Office at 1 Pencarrow Place, Fishermead will close mid June (date TBC) and we will be welcoming visitors at the Reception desk at the CPCC Community Hub, Springfield Boulevard SPRINGFIELD, MK6 3JS. Please check our website for the latest information.



**MARTIN PETCHEY**  
07712 485 255  
martin.petchey  
@campbell-park.gov.uk



**OPHELIA COLE**  
07447 499 285  
ophelia.cole  
@campbell-park.gov.uk

## COUNCIL OFFICE STAFF

**CLERK TO COUNCIL**  
DOMINIC WARNER

**DEPUTY CLERK**  
PERRI SULLIVAN

**COMMUNITY OFFICER / COMMITTEE CLERK**  
TRACEY JONES

**ESTATES MANAGER**  
CHRIS HINDSON

**ESTATES OFFICER**  
SOPHIE GIBBENS

**RESPONSIBLE FINANCIAL OFFICER**  
P/TIME LISA BRADLEY

**ADMIN ASSISTANT**  
TRACEY WAISTNEDGE

# THE COMMUNITY HUB OPENS ITS DOORS

A long-held dream of Campbell Park Community Council is becoming a reality for our residents. Rising from shared hopes, grassroots planning, and countless working hours, the brand-new Community Hub has opened its doors, offering a vibrant space where neighbours can connect, create, and thrive together.

Located in Springfield, the geographical centre point of the CPCC area, the Community Hub has been designed as a multi-purpose venue, blending modern architecture with welcoming, inclusive features. With its flexible rooms and large outdoor space, the Hub offers the ability for exciting new opportunities to be inspired and delivered for the benefit of all the community.

The Community Hub has a café open 7 days a week offering delicious and affordable food and drinks. It will host a wide range of activities throughout the year including regular sessions run by Citizens Advice MK, seated exercise and the opening of a Community Larder. We are working with community groups to offer use of our spaces for them to deliver services and new opportunities for our residents. Our café partners, All People Active, will also be running an activity-based sport and wellbeing programme for all ages, so keep a lookout for what's coming up as our Programme develops over the coming months. Your ideas and suggestions on what you would like to see going on at the Community Hub, are welcomed and encouraged.

Whilst the Community Hub will be open and welcoming you, we are also busy organising an official opening event, which will be held on 27 September. A big celebration is being planned, complete with live music, food stalls, and community-led performances. Are you part of a local group or activity that would like to take part in the official opening event? We would love to hear from you.

Everyone is invited. There will be more about this in the next edition of Homeground, but make sure you save the date!

**The Community Hub is more than a new venue—it's a new chapter. One that promises to bring neighbours closer, strengthen bonds, and inspire a more connected future with new and exciting opportunities across the CPCC area.**

For more information, visit [www.campbell-park.gov.uk](http://www.campbell-park.gov.uk) and follow us on Facebook and Instagram to keep up to date



## COUNCIL MEETINGS

*All meetings will be held at  
the CPCC Community Hub  
and are open to the public*

17 June, 7:30pm

22 July, 7.30pm

16 September, 7:30pm

## COMMITTEES

### Planning, Infrastructure

#### & Transport

2 June, 6.30pm

7 July, 6.30pm

4 August, 6.30pm

1 September, 6.30pm

### Finance, Administration

#### & Policy

3 June, 7pm

2 September, 7pm

#### Estates

10 June, 6.30pm

15 July, 6.30pm

9 September, 6.30pm

### Community & Communications

29 July, 6.30pm

# CPCC GRANTS

## Campbell Park Community Council

The Community Council is keen to support groups delivering services in the CPCC area.

Any group, society, playgroup, or charitable organisation in the CPCC area, or benefiting residents of the CPCC area, may apply for a grant from the Community Council. If you can show us that the grant will be put to good use, we are only too pleased to help.

Grant applications will be considered on a quarterly basis (April, July, October and January) and can be awarded up to a maximum of £1000.

Community Start-up grants are available to new groups within their first 12 months of operation and will also be considered quarterly. These can be awarded up to a maximum of £1500, paid in 2 or more instalments.

### We recently awarded the following grants:

- ❖ £330 to Frank Howe Court Social Club to help them to purchase parasols and cushions for their communal garden area.
- ❖ £250 to Friends of Conniburrow & Pebbles Family Centre Parent forum towards the cost of providing a family day out
- ❖ £1000 to MK Breakdance & Activities for the delivery of breakdancing sessions at the Trinity Centre and the purchase of equipment.

### Projects we have funded:

Connections Support were awarded a grant of £499 to provide a volunteer befriender in the local area.

We have received feedback from Connection Support who have told us that "clients said they greatly value the support from their Befriender volunteer with 90% feeling more in control of their lives as a result of the intervention and nearly all said they felt less anxious and that their mental health and wellbeing had improved.



Our volunteer befriender, Joy, has assisted clients who are struggling with mental health issues, loneliness, poor physical health and who have felt unable to cope.

The extra support that Joy can offer means that clients become better able to cope and get control back of their lives, free from services. Joy has befriended many people since she began volunteering with us.

For more information about our grant funding, please visit <https://www.campbell-park.gov.uk/services/grants/> or contact the Community Officer on **01908 608559**.

**Would you like to start a new activity, deliver a community service or start a community group for local people within the CPCC area, but need a venue? Perhaps you need use of a space to run your sessions, to enable you to gauge interest or to build up the attendance but without the burden of venue hire charges. We might be able to help you!**

We have a variety of spaces available for free use by not-for-profit/community groups where the use meets our criteria. To be considered, you will need to complete our Free Use application form. Please contact us to find out more.

**Free use** is offered on the basis that the organisation uses the space to provide or enable the delivery of a community service/activity which helps to meet the needs of the local population. Applicants must provide details of the benefit/s they will offer to residents of the CPCC area, which includes Willen, Woolstone, Fishermead, Oldbrook, Springfield, Newlands and Winterhill

### Applications which will help to address the following objectives will be prioritised;

- ❖ **Isolation and Loneliness** – create an inclusive environment where isolation and loneliness can be sensitively addressed and further support/advice offered.
- ❖ **Health and Wellbeing** – initiatives which address the physical and mental health of our community.
- ❖ **Education and Work** – provision for residents to access resources which allow them to pursue their education/career goals.
- ❖ **Advice and Advocacy** – deliver expert resident support and advice including information and drop-in sessions.

These objectives will be reviewed on an annual basis and will be determined by the outcomes of the annual resident consultation.



# Community Cafe at the CPCC Hub Introducing All People Active



We are pleased to announce that All People Active will be operating the Café @ The Hub – the 'All Good Café'

All People Active (APA) is a community interest company (not for profit) which exists to support people to be active, healthy and happy.

APA have been running since 2018 across MK and have engaged over 25,000 people in their community programmes.

James Gregory, CEO of All People Active CIC is excited to be an integral part of the new opportunities that will be offered at the Hub.

"We ran All Good Cafe for the last 2 years at MK train station, delivering high quality coffee, breakfasts and lunches for commuters and office workers. We are really excited to be working with CPCC to bring high quality, affordable food & drink as well as a comfortable and welcoming place to be, to CPCC residents and visitors.

The cafe proceeds will go towards the expansion of our community sports & wellbeing programmes across the local area.

There are many barriers that exist that make it difficult for people to access sport & physical activity. APA remove these barriers by taking high quality sport & physical activity sessions to the doorstep of these communities."

We work with our communities & strategic partners to deliver what people ask for. Some of our flagship sessions include:

- Fun Fitness 4 Women
- MK Girls Can Club
- Refugee Football Night
- Fit and Fed Holiday programme
- MK Mini Movers

If you have any ideas of what type of activity sessions you would like to see, then please get in touch [james.gregory@allpeopleactive.org](mailto:james.gregory@allpeopleactive.org)

**Come in and see us soon!**

Follow us on Social Media to find out more about the opening times and see what we have on offer.



# COMMERCIAL ADVERTISING

Homeground magazine is delivered to 6000 households in the CPCC area and is an ideal place to advertise your business or company at competitive rates.

For more details, please contact us at: [admin@campbell-park.gov.uk](mailto:admin@campbell-park.gov.uk)



## Join our Award Winning Care Team !



### Time to Thrive

**Contact Us Today!** ☎ **01908 110 800**  
✉ [enquiriesmkbedford@walfinch.com](mailto:enquiriesmkbedford@walfinch.com)  
🌐 <https://walfinch.com/branches/milton-keynes-bedford/>

#### We are hiring support workers in Milton Keynes & Bedford

#### What are we looking for?

- We are seeking a kind and compassionate support worker to join our team. **Full-time & Part-time vacancies available.**
- The ideal candidate will provide essential support to clients in their own homes, ensuring their comfort and well-being. **Right to Work in the UK is essential.**
- **Valid UK Driving Licence & own vehicle.**
- **Hardworking with good communication skills.**



## Home care doesn't have to look like home care



*"I love getting out and about again"*

### Time to Thrive

**We're all different – so why should your home care be the same? For home care with a difference, talk to us today.**

Contact us: 01908 110 800 / 07459368080 | [Enquiriesmkbedford@walfinch.com](mailto:Enquiriesmkbedford@walfinch.com) | <https://walfinch.com/branches/milton-keynes-bedford/>

At Walfinch Milton Keynes and Bedford, we believe in personalised care that empowers you to live life your way. Whether it's lacing up your tennis shoes, going for a swim, or walking the dog, we champion an active lifestyle tailored to your preferences. Our highly trained team, led by Franchise Owners **Spandana** and **Dimpu Boppuri** and experienced Care Manager **Ninitha Thomas**, provides a wide range of services, including:

- Personal Care
- Live in Care
- Dementia & Palliative Care
- Meal prep
- Medication support
- Companionship
- Light housekeeping, Shopping



# CLIMATE CHANGE ECO TIPS

*Campbell Park Community Council*

## MAY – IN THE UTILITY ROOM

1. When using a washing machine ensure there is a full load and turn down the temperature. Heating the water to higher temperatures uses more energy.
2. Electric tumble dryers use a lot of energy. If it's a nice day dry your clothes outside. In the winter most drying is done by the wind, so check the forecast for wind days.
3. Irons use a lot of electricity to get hot – only iron clothes that really need it.
4. Cut up old clothes or sheets that you were going to throw out, to use as clothes for cleaning jobs rather than buying new cleaning clothes.

## JUNE – HOLIDAY HIGHLIGHTS

1. Going for a day out to the beach? Take a bag in your pocket and pick up any litter you see.
2. Planning your day out or holiday journey? Use public transport if you can to reduce your carbon emissions. Travelling by train or ferry can be part of the adventure.
3. Waste? When you are away try to take as much care to save energy, recycle, prevent food waste as you would at home.

## JULY – YOUR ELECTRICAL APPLIANCES

1. You can save around £30 a year just by remembering to turn your appliances off at the plug rather than leaving them in standby mode.  
**[www.energysavingtrust.org.uk/home-energy-efficiency/energy-saving-quickwins](http://www.energysavingtrust.org.uk/home-energy-efficiency/energy-saving-quickwins)**
2. Take your phone charger out of the socket when not in use. It uses energy even when it's not charging your phone.
3. Buy A-rated electrical appliances whenever you can. They may be more expensive initially but you will save on your energy bills.
4. The location of your fridge can make a difference in how energy efficient it is. Make sure it is out of direct sunlight and not close to the oven. Keeping it against an outside wall will help the heat it generates escape easily, and always make sure that there is a few inches' space all around the fridge so that air can circulate.
5. Electrical gadgets are great, but the environmental impact of manufacturing them and disposing of them at the end of their life is high. Think before you buy more gadgets.

Join the herd!

Willen Hospice  
**MIDNIGHT**  
**MOO** 

Friday 20 June | 10pm  
Middleton Hall, Centre:MK  
[www.willen-hospice.org.uk/moo](http://www.willen-hospice.org.uk/moo)



**SIGN UP TODAY!**

Proudly sponsored by



# 20mph Speed Zone in Woolstone

We have been advised by MK City Council (MKCC) that the statutory consultation (Reference: TRO-422) has been completed.

During the consultation period, MKCC received a number of responses with residents lodging notes of support, comments as well as some objections to the proposed traffic regulation Order.

With MKCC having considered all comments and objections, they have decided to implement the proposed 20mph speed zone in Woolstone.

A copy of the consultation report and decision can be viewed on the 'Consultation' area of the MKCC website.

MK City Council, in exercise of its powers under the Road Traffic Regulation Act 1984, has on 15th April 2025 made the traffic regulation Order. The traffic regulation Order will take effect from 18th April 2025.

Signage will be installed in the coming weeks and expected to be completed mid-May. Once the signage is in place, the 20mph speed restriction will become operational

## **Do you live in Willen, Oldbrook or Springfield and want a 20mph zone in your area?**

MK City Council (MKCC) is committed to making the city's roads as safe as possible by introducing a 20mph speed limit within residential areas - You are seven times more likely to survive being hit by a vehicle travelling at 20mph than 30mph.

The implementation of the 20mph zones in both Woolstone and Fishermead came about as a

result of local residents getting together to start a petition, asking their neighbours and local community for their support and then presenting this to MK City Council, with the support of CPCC.

The local community must support the reduced speed limit to help with compliance and raise awareness. In an area where a 20mph limit is introduced, the speed limit will be self-enforcing and MKCC will install signs to notify drivers. They will not introduce traffic calming measures such as speed humps or cameras.

A community led petition would need to be gathered to provide MK City Council with the evidence it requires to demonstrate backing by residents and wide support of the implementation of the 20 mph zone.

## **How to request a 20mph speed limit.**

MK City Council now require all applications for 20 mph zones in our area to be submitted by CPCC. This application must also be supported by at least two MKCC ward councillors.

In order for CPCC to support making an application residents must, in the first instance, contact CPCC with their proposal and outline how they plan to work with other residents to gather a petition to meet MK City Council's requirements to evidence local community support for a reduced speed limit in an area. CPCC can provide guidance on how to do this.

MK City Council will consider completed applications (which needs to include the petition as evidence of community support) each year between 1 April and 31 August.





# CHAPMANS EDUCATIONAL FOUNDATION

(Chapman's Charity – founded 1786)

Meeting of the Trustees held at the Woolstone Community Centre at 10.30am on Saturday 12 October 2024.

1. The trustees elected the chairperson to the charity and John Howard was elected for one year.
2. The Trustees looked at the report from the Village Hall management committee and noted that there were some repairs needed to be carried out in the roof space after damage to the wiring and improvements in the hall, the trustees agreed to increase amount required to carry out the improvements to the hall and towards the cost of the rewire in the loft space.
3. The Trustees agreed to the amount under clause 16 the payments to both the churches at Ravenstone and Stoke Goldington for the promotion of religious instruction in Sunday schools the amount to £250 pounds each and the Woolstone church.
4. The applications for grants for under the Educational Foundation were looked at by the trustees and all 19 grants were approved, the average being £500. It was also agreed by the trustees that applications for the first time should be increased of the amounts to be paid out to £700 and to increase the grants to £800, £600 £350 as the funds would allow. It was also agreed that encouragement would be given on past applications, and the trustees were pleased to see feedback as to how the grants had been used and how well they had done with their courses. Noted that trustees are not able to make any financial gain with grants for themselves or family
5. It was agreed that the next meeting of the Trustees of the charity would be at the Ravenstone Village Hall, Ravenstone.

**David Pafford**

*Trustee to the Chapman Educational Foundation*

## THE GREAT BIG GREEN WEEK

**Let's swap together for good**

**7th - 15th June**



We are taking part in the Great Big Green Week 2025 – the UK's largest annual celebration of community action to tackle climate change and protect nature.

On **Monday 9 June at 10:30am** we will be officially launching our community library at the CPCC Hub. We are inviting residents to bring along a book to donate to the library, take a book away to enjoy and return at your convenience. Swap and share with each other.

We will be holding a litter picking session on **Saturday 7 June**. This is open to everyone to take part. Please meet at the CPCC Community Hub at 10:30am

Look out for news and updates on our Facebook page and on the screen in the Café @ The Hub.

For more information about Great British Green Week visit their website at [www.greatbiggreenweek.com](http://www.greatbiggreenweek.com)

# 2025 INTERNATIONAL YOGA DAY EVENT

Report by Joanna, Yoga for Health Alliance

International Yoga Day on 21st June is celebrated around the world. It is recognised by the United Nations for the transformative powers of yoga.

Following the huge success of our first event to celebrate this special day in Milton Keynes last year when we were joined by more than 400 yogis, our second gathering will take place on Saturday 21st June 2025 at The Labyrinth, Willen Lake North (by the Peace Pagoda.)

With two classes running side by side from 11am to 4pm there will be plenty to choose from; from Hatha Yoga to Vinyasa Flow, family yoga, sound healing, breathwork, meditation, mindfulness, Yin Yoga, Body Balance and much, much more. Suitable for practitioners of all levels.

Our local, experienced teachers will welcome you onto your mats to practice in the open air (weather permitting.) So whether you're an experienced yogi/ yogini or are new to yoga there will be something for everyone.

There is something very special about practicing together and no more so than in this special place on this very special day. Book your place now. The event is free, however if you can make a donation this will help to cover costs and enable the event to run year after year. Go to [eventbrite.co.uk/e/international-yoga-day-event-at-willen-lake-north-the-mazemilton-keynes-tickets-1300945696599?aff=oddttdcreator](https://eventbrite.co.uk/e/international-yoga-day-event-at-willen-lake-north-the-mazemilton-keynes-tickets-1300945696599?aff=oddttdcreator)

We are grateful for support of local businesses - Kilo Beaters, the Head Sponsor of this year's event, The Poplar Osteopathy Clinic supporting the event for the second year in the row, Bushido Studio and Response Business Finance enabling local community to enjoy the day! **We would also like to thank Campbell Park Community Council for awarding us a grant towards the costs of this event.**

We're all looking forward to seeing you on your mats. Namaste — Yoga for Health Alliance For questions contact [yoga.state.of.mind.daily@gmail.com](mailto:yoga.state.of.mind.daily@gmail.com)



## EVENT 21 JUNE

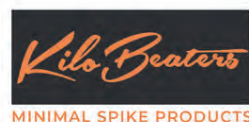
Willen Lake North (The Maze)

Annual outdoors **International Yoga Day** event in Willen Lake North brings yoga enthusiasts and anyone curious about holistic health together.

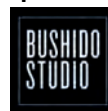
Join us on **Saturday 21 June 2025 from 11am** to practice different styles of yoga, meditation, movement and beyond.

The event is free to attend, however, if you can, we ask you to **book your ticket on Eventbrite** with a donation (QR code below or search for International Yoga Day event at Willen Lake North). This enables us to cover all costs as well as to keep you updated as we confirm classes.

**Head Sponsor:**



**Sponsors:**



**Hatha Yoga  
Vinyasa Yoga  
Yin Yoga  
Kundalini Yoga  
Bhakti Yoga  
Meditation  
Mindfulness  
Breathwork  
Quantum Flow  
Sound healing  
Nia Dance  
QiGong  
Reiki  
Tai Chi  
Body Balance  
Inclusive Yoga (mat/wheelchair)  
Family Yoga  
and more**



@yoga-state-of-mind.daily



Yoga for Health Alliance (Milton Keynes)





# SPOTLIGHT ON SPRINGFIELD

Springfield lies just to the east of the city centre. The name Springfield comes from a field name. The road names are taken from historical rivers and wells in London. Developed since 1975, it was one of the earlier areas of the city, built mainly in terraces and around squares. It also shares its name with the fictional city in which the animated American sitcom The Simpsons is set.

The local centre comprises a local convenience shop and the Springfield Community Centre, which hosts Buttons Pre-School (Mon-Fri) and

a variety of other activities, including private hire opportunities for gatherings, meetings and celebrations.

The estate has a number of play areas and green spaces, as well as the new CPCC Community Hub.

The estate is served by two schools:

- Shepherdswell Academy, Billingwell Place, Springfield, MK6 3NP 01908 665 418
- Orchard Academy, Springfield Boulevard, Springfield, MK6 3HW 01908 670 681



Woolstones beautiful 13th Century Community Centre is available for regular and ad hoc hire by groups and individuals



Perfect for parties, receptions, yoga, dancing and many more activities



To book your event either scan the QR code or visit us at

[www.woolstonecommunitycentre.co.uk](http://www.woolstonecommunitycentre.co.uk)



Charity Registration number: 1209751

**ARE YOU STRUGGLING WITH A LOVED ONE IN ADDICTION?  
WE CAN SUPPORT YOU TO.....**

**CONNECT** with others who understand  
retain **HOPE** & optimism  
rediscover your own **IDENTITY**  
develop more **MEANING** & control over your life  
**EMPOWER** yourself & be more positive

We offer face-to-face meetings, guest speakers to increase your knowledge & online support

We all have lived experience & everything we do is confidential, non-judgemental & free

We understand how isolating this can be -so come and have a cuppa with us, you will be very welcome at any one of our local meetings which take place in the evenings

**To find out more please contact**

Valerie: 07874849659

Lynn: 07598346244

Wendy: 07900229137

Website: [www.dafsmk.co.uk](http://www.dafsmk.co.uk)

Facebook page: DAFS-Drug & Alcohol Family Support



**POSITIVE  
CONNECTIONS**



# Easter Party 2025

It was lovely to see so many families enjoying our Easter Tea Party at the Springfield Centre. This event is always lots of fun for our local children.

We were lucky that the weather was lovely and sunny so the children could also play outside. While outside, they helped us to sow lots of sunflower seeds in pots. We are looking after the seedlings and will plant them at the CPCC Community Hub in Springfield very soon, for everyone to enjoy through the summer. The children also planted a seed in a pot to take home to plant in their own garden. Let's hope they grow well!

Once again, we had the reptile roadshow at the party, so the children (& some adults!) were able to hold some of the creatures... a few even had a snake draped around their shoulders or a chinchilla balanced on their heads!

Our lovely face painters created lots of fantastic Easter themed designs in bright colours and glitter.

Councillor Val had lots of craft activities available to choose from, including Easter bonnets to decorate. We also offered the opportunity for the children to make an edible painting. Using edible paper made from potato starch as the base, the children used icing and a variety of toppings to create their pictures.

Councillor Penny had competitions and prizes and helped this year by Councillor Katherine with a name the cuddly toy game.

As usual, we had refreshments & lots of snacks for everyone to enjoy and the children were excited to each receive a chocolate Easter Egg to take home!





# LANDSCAPING REPORT

*Campbell Park Community Council*

## WINTER MAINTENANCE CHALLENGES AND OUR COMMITMENT TO BIODIVERSITY

As we move through the year, we want to keep you updated on the progress of our winter maintenance programme, the challenges posed by recent weather changes, and how we're adapting to protect the environment and support biodiversity across our estates.

## WEATHER CHALLENGES IMPACTING WINTER WORK

Our maintenance is split into two seasons:

- **Summer:** Focused on mowing lawns, trimming edges, and controlling weeds.
- **Winter:** Dedicated to managing shrubs and hedges, with light trimming or more extensive cutting depending on the needs.

This winter, the unusually heavy rain and warmer temperatures have caused disruptions to our schedule. Typically, our mowing season runs from April to September, but last year, the growing season extended from early March until late December, resulting in extra rounds of lawn care and hedge trimming. This has made it harder for us to stay on track with winter tasks, especially as wet conditions have affected our ability to access certain areas with our equipment, water logged areas and softening of the ground cause our vehicles and machinery to get stuck or to lose traction and slip, it also contributes to soil erosion especially when vehicles are driven over it causing ruts and deep depressions, in some cases this can not be avoided and we will do our best to reinstate the grass once the job has been finished.

We're working hard to prioritise tasks despite these challenges, but there may be delays in some areas. Rest assured, we are committed to completing all winter maintenance across the estates, even if some areas take a little longer to reach. Any larger winter works not completed by the beginning of March (due to bird nesting season) will be prioritised at the beginning of the next winter schedule.

## LOOKING AHEAD: SUMMER MAINTENANCE AND BIODIVERSITY INITIATIVES

Although we've faced some delays, we're preparing for the start of the summer maintenance programme, here's what to expect:

- **First Cut of the Season:** Lawn mowing began in early March, with strimming and hand mowing following in the weeks after.

- **Weed Control:** We will apply a small amount of targeted herbicide, only in areas where weeds have become overgrown, such as shrub beds and places where brambles and self-setting trees are out of control. We prioritise strimming as our main method of weed control to minimize the use of chemicals, supporting the council's environmental guidelines and protecting local ecosystems.

In addition to maintaining the appearance of the estates, we are deeply committed to promoting biodiversity in our green spaces. Here's how we're contributing to a healthier environment for both residents and local wildlife:

- **Revised Wildflower Areas:** Based on your feedback, we have updated the locations of our wildflower zones. These areas will be carefully managed to encourage pollinators such as bees and butterflies while enhancing the natural beauty of the estates. Importantly, we've also revised the layout of these wildflower areas to allow for open community spaces where residents can gather and enjoy the outdoors. By balancing the creation of wildflower habitats with open green spaces, we can support biodiversity while maintaining areas for social and recreational use.
- **Minimal Chemical Use:** We are continually working towards reducing our reliance on herbicides and chemicals. By using more environmentally friendly practices, such as strimming and natural methods of weed control, we aim to protect the health of the soil, water, and local wildlife.
- **Native Planting and Tree Initiatives:** In addition to maintaining native species, which are more resilient to changing weather conditions and provide essential habitats for birds, insects, and small animals, we're also proud to support broader environmental initiatives. Milton Keynes City Council has been actively planting trees in various locations around the area, further contributing to biodiversity and enhancing the green spaces we all enjoy. These trees will help improve air quality, provide shelter for wildlife, and add long-term value to the natural landscape.

While we've faced some challenges due to changing weather conditions, we remain committed to maintaining the estates to the highest standard. We are adapting our winter maintenance programme and preparing for the start of the summer season, all while prioritising environmental sustainability and supporting biodiversity.

If you have any questions or feedback regarding our maintenance programmes, or would like more information, please don't hesitate to reach out. You can find additional details and submit enquiries through the **CPCC website**.

**Thank you for your continued understanding and support.**



# Hello from everyone at Shepherdswell Academy

We are delighted to share the wonderful experiences and achievements of our pupils and staff during this spring term at Shepherdswell Academy. It has been a term filled with excitement, learning, and memorable moments.

## Year 2 Space Camp

Our Year 2 pupils had an incredible adventure during the Space Camp held at school. They stayed overnight, gazed at the stars, and drew constellations, igniting their curiosity about the universe. This unique experience was a fantastic way to introduce the wonders of space to our young learners, leaving them with lasting memories of getting to sleep overnight at school.

## The Jungle Book Performance

We were thrilled to host M&M Productions for a captivating performance of "The Jungle Book." The children were mesmerised as they watched the beloved story come to life on stage. They particularly enjoyed singing along with the characters, making the experience even more engaging.

## Year 1 Visit to Milton Keynes Museum

Our Year 1 pupils had an exciting trip to the Milton Keynes Museum, where they explored various forms of transport and learned about the history of Milton Keynes. The visit was an eye-opening experience, allowing the children to see how life in our city has



evolved over time. The museum's exhibits provided a hands-on learning opportunity, making history come alive for our young learners.

## Expansion of Nursery Provision

We are pleased to announce the expansion of our nursery provision. From Monday, 28th April, we will be welcoming 2, 3, and 4-year-olds into our nursery programme. This extension aims to provide high-quality early education to more children in our community, fostering their development from a young age.

**If you are looking for a nursery or school place, please contact the school office.**

**01908 735865**



Willen Residents Association have officially been up and running for over a year. We held our first AGM on the 31st of March, and it was well attended, with a few new faces at the meeting. Over the past year we have been involved with a few issues including MK East, the cancelling of local bus services, and getting the enormous hole fixed next to Willen Pavilion.

We have taken on our first project, which is to clear the pond area behind the school, and return it to how it was over 20 years ago. It was terribly overgrown, covered with brambles and nettles, and a tree has fallen into the pond. With the generous help of Campbell Park Community

Council, the area has been cut back, and a team from the residents association have cleared some of the pond and surrounding area. Thanks to a generous grant from CPCC, we will be removing all of the old rotten benches, and installing a brand new bench. We are going to be building a bug village, and hopefully have some bat boxes installed high up in the trees. With help from CPCC we will also be growing a wild flower meadow on the area opposite the pond, and we hope that Willen School and visiting children will make good use of this area to learn all about nature. Once this is complete we will be looking for other projects in Willen to focus on.

We would like to thank Campbell Park Community Council, and Councillors Sam Crooks and Val Dixon for their generous grants, and for all of the help, encouragement, and advice they have given us over the past year.

We meet on the last Monday of every month at 7pm at Willen Pavillion. Everyone is welcome, and we would love to see all Willen residents getting involved. You can follow us or contact us via our Facebook page 'Willen Residents Association'.



# Oldbrook First School & Nursery Update

## Respect

There has been lots of fun and exciting learning opportunities for our children to explore during the Spring Term. We welcomed the school community into school for 'Our World Day' to learn about different cultures and traditions. The children in Year 1 have been learning about the Victorians and had a wonderful trip to Holdenby House to bring their learning alive.

The school community celebrated World Book Day, a day full of the wonderful world of literacy and reading. The day celebrated the importance of developing a love of reading and all children walked to Waterstones to spend their book vouchers. It was a great way to celebrate!

The children across the school and nursery have enjoyed a range of other visits and first-hand learning experiences to support their learning journeys as well as developing further their understanding of our school community values. These are at the heart of everything that we do because together we make the difference!

## Responsibility

## Teamwork

## Kindness

## Friendship

## Honesty



Space



Down's  
Syndrome  
Day



Our World  
Day



Library Visit

If you have a child who is due to start Nursery or School in September 2025 and would like to find out more about our amazing community school, then please contact the office for further information. Our nurturing school and nursery will enable your child to reach their full potential in a happy and caring learning environment. The school also offers Night Owls wrap around care from 8am until 6pm.

**Mr Hopkins**  
**Headteacher**

01908 604689  
office@oldbrookschool.co.uk  
www.oldbrookschool.co.uk

**Together we  
make the  
difference**



## Orchard Academy Summer Report

At Orchard Academy it has been a term filled with enriching activities and valuable learning opportunities.

### Year 3 and Year 4 Local Area Trips

Our Year 3 and Year 4 pupils have had the opportunity to attend trips in the local area with the Parks Trust, supporting their learning in Science and Geography. Year 4 explored rivers and their habitats, gaining a deeper understanding of the ecosystems and wildlife that thrive in these environments. Meanwhile, Year 3 ventured into Campbell Park on a very rainy day, where they studied the park's wildlife and learned about the importance of conservation.

### Year 5 Visit to the Safety Centre

Year 5 pupils visited the Safety Centre where they learned essential skills to stay safe in various

situations. The visit included lessons on water safety, what to do in an emergency, and online safety. This experience was invaluable in teaching our pupils how to protect themselves and make responsible decisions in different scenarios. This experience was fully funded by Campbell Park Community Council.

### Eco Committee

The Eco Committee attended the Parks Trust tree planning event and between them they planted over 30 trees as part of the project. They are planning on planting some trees and shrubs at school as part of their mission to reduce carbon.

The spring term at Orchard Academy has been a remarkable journey of discovery and growth. If you are looking for a KS2 space for your child please contact the school office.



## The Willows and Early Years Centre Summer Report

We have been busy this term as usual at The Willows. We have been completing lots of fabulous learning both inside and outside and we have taken part in World Book Day and celebrated the cultures of our community.



Our children are taking part in Hobby the Horse where they will be making their own hobby horses and taking part in gymkhanas to raise money to support Ride High in Milton Keynes. There is lots of fun and prizes involved.



Are you looking for a nursery place for this September? We have places for 2 and 3 year olds. Please pop into the school office and collect a form.



## Willen Primary School Summer Report

### Willen Primary School Embraces Change and Adaptation During Science Week!

Willen Primary School recently concluded a vibrant Science Week, where the theme of "Change and Adapt" resonated throughout the school. The week's activities focused on how science plays a crucial role in making the world a better place, sparking enthusiasm and intrigue in students of all ages.

The young scientists of Early Years were captivated by colourful experiments, making lemon volcanoes erupt and rainbows travel and dissecting flowers, all while decked out in goggles and aprons. Year 4 delved into the fascinating world of biology, learning about antigens and antibodies – vital components in how our bodies adapt to change. Meanwhile, Year 5 put their analytical skills to the test by writing compelling job adverts for scientists, outlining essential qualifications and the diverse duties involved in scientific careers.

Throughout the week, the school buzzed with predictions and scientific reasoning as children engaged in hands-on investigations. The "Change and Adapt" theme



let students explore a range of scientific ideas, like biological processes and chemical reactions, and their worldwide impact.

The week culminated in a showcase of learning, leaving students with a deeper appreciation for the power of science and its potential to shape a better future. The energy and engagement witnessed throughout Willen Primary School highlighted the success of the week in nurturing the next generation of scientific thinkers.



# Do you have more than 1 green bin?

Residents can subscribe to have up to two additional green bins collected weekly. The first green bin remains free for households. The 2025/26 subscription cost is £55 per bin and the service will run from 12 May 2025 to 31 March 2026.

The city council will issue a permit sticker for each subscribed additional green bin within 10 working days of the subscription start date. Additional green bins without a valid permit sticker will not be collected after May 2025.

Anyone who does not wish to subscribe for an additional green bin collection can still take extra food and garden waste to a local recycling centre or compost at home.

More information can be found on the MK City Council website, where you can also complete your subscription on line. Alternatively, contact 01908 252570.

## What can I put in my green bin/or caddy?

All food waste allowed, including:

- bread, baked goods
- coffee grounds
- dairy products
- fruit and vegetables including peelings
- mouldy or out of date food
- pet food

- plate scrapings
- raw or cooked meat, fish or bones
- tea bags

## Garden waste allowed:

- dead flowers
- grass
- leaves
- plants
- small branches up to 15 cm in diameter
- twigs
- weeds
- windfall fruit

## Compostable items allowed:

- compostable cups and caddy liners that display the standard EN13432 or display the 'Seedling logo'

## Garden waste not allowed:

- branches over 15 cm in diameter
- Japanese knotweed
- plant pots
- soil

## Other items not allowed:

- all animal waste, including dog poo, cat litter, hamster/gerbil bedding, etc.
- items labelled 'compostable' that do not display the standard EN13432 or display the 'Seedling logo'
- items labelled 'biodegradable'
- nappies – disposable or biodegradable

## Fishermead Gardens Update

The Forest Garden is coming to life.



Volunteers have been making progress with sowing seeds and planting at the **Community Garden** next to the Trinity Centre. During the school holiday Action Speaks and MK Melting Pot worked together to enable children attending the holiday club to help in the garden too, planting herbs and vegetables.

Come along and join in, and do as much or as little as you can – working together makes it happen. Volunteers meet every Tuesday and Thursday at the community garden, between 11am–4pm. For more information contact Ophelia on 07447 499285.

## Assisted Bin Collections Update

MK City Council have recently asked residents to update their details if they had an assisted bin collection. Residents were required to respond by 18 April to ensure their service continued. If you missed the deadline or would like to request an assisted collection you can contact MKCC. Proof of disability is required.



**There's more information on assisted collections at: [www.milton-keynes.gov.uk/assisted-collections](http://www.milton-keynes.gov.uk/assisted-collections).**

# Willen Pond Improvement Project



In February, the CPCC Landscape team undertook a project to open up the area around the pond in Willen, which is located between the primary school and the pavilion. The area had become a hot spot for litter, and brambles had overgrown the bulbs and wildflowers in the area. Willen Residents Association have been litter picking the areas that they could access, but had asked for help to clear back some of the growth so the area could be properly cleared. The Residents Association have been given a grant to carry out further improvements to the area including putting a bench here, so that everyone can enjoy the wildlife in this peaceful spot. As you can see from the pictures, it's made quite a difference (we'll be back in the summer to remove the fallen tree from the pond)

This is an area with great potential, which can hopefully be realised now, with regular maintenance from CPCC's landscape team, and input from passionate residents wanting to make a difference to their local environment.

**If you want to achieve something similar in your locality, get in touch with us to see what we can do together.**

## FREE ACTIVITY PACKS FOR CHILDREN

The Easter Activity packs were really popular again and very quickly hopped out of the doors into the hands of eager Easter bunnies!

**Our next activity pack will be for the May School Holiday with packs being available to collect from Monday 19 May at the CPCC office in Fishermead.**

To ensure as many families as possible can benefit from this, please only take one pack per child. The packs will be limited in number and only available while stock lasts.

If you have any queries, please contact **admin@campbell-park.gov.uk** or **01908 608559**

**We will also have activity packs for the Summer Holidays, which can be collected from Tuesday 15 July.**

**The packs will contain a variety of paper-based activities, colouring sheets & craft supplies.**



# Kid's Corner



## Hello Children,

### Its Spring at last!!

The clocks went forward one hour, the evenings have got lighter, so you can play out a little bit longer. So now we can count down for the next 12 weeks until Summer.

Did you get a chance to come to the Easter Tea Party?

It was a very popular day with our usual Face Painter, Reptile Man, Crafty Corner, and normal mayhem!!!! Also everyone was very happy with their eggs.

I hope you all get a chance to play in the play area near where you live.

Springfield has a really big play area, and then Fishermead has the Pirate Park, Oldbrook has a small children's play area and the Skate Park. It also has some exercise equipment for Mum and Dad.

Woolstone and Willen both have large grassy fields to play on, or to take a picnic.

So we have lots of outdoor activities to play. Let's hope you can get out there with Mum and Dad and have some fun all together.



"Sunshine in Your Street" is back, so you can pop into the office and pick up some free sunflower seeds from 1st May until 30th. You can pop them in your garden or outside your home.

Some will grow 4ft and some 6-7ft!!!! Good Luck and happy growing!!!!

### First is Pets Club...

Here are some pictures of the Christmas Day Kittens, they will be going to forever homes soon.



White Tabby is called Crazy Boy, and fluffy tabby is called Foggy. The fluffy white tabby is called Suki, and he is staying with us at home!!!

### Nature Watch....

#### A quick Quiz....

To win a prize of 10 coloured pencils or coloured felt tip pens in a clear case.

Just answer the questions below and tell us your name, age, school and your address and ask your parent/carer to email this to us at [admin@campbell-park.gov.uk](mailto:admin@campbell-park.gov.uk) by 31 July 2025

The first 3 names out of the hat will win!!!

Let us know if you prefer pencils or felt-tip pens.

- 1) What bird lays blue eggs?
- 2) There are a lot of yellow flowers out at the moment. The ones with big trumpets in the middle are called what?
- 3) 2 part question.... A) In the ponds and on the canal, you will see big blobs of jelly like stuff around the edge, with a black dot inside. What is it called? B) What does the black dot turn into?
- 4) What do caterpillars turn into?



So, all the usual things to remember:  
**Stranger Danger. Green Tick Code.**



**Water Beware:** Respect The Water

#### Send in a Poem:

If you send in a poem and it goes into the next Homeground you will win a prize.

#### Jokes:

Do you have any jokes?

If so, send them in and you could also win a prize if we put them into the magazine.

**P.S:** If you send anything into Kid's Corner we need to know your name, address, your age, and what school you go to, or we cannot send you your prize. The address is: CPCC Community Hub, Springfield Boulevard, Springfield, Milton Keynes MK6 3JS

Until next time. Have fun!!!!

**Cllr Penny.**



# Summer Activities... Save the Date!

**CAMPBELL PARK  
COMMUNITY COUNCIL**

**SUMMER PLAY**

**BOTH EVENTS HELD AT  
SPRINGFIELD  
OFF STAMFORD AVE  
MK62HX**

**WEDNESDAY 6<sup>TH</sup> AUGUST  
1.30PM - 3.30PM  
MESSY, MIXED &  
IMAGINATIVE VAN**

**WEDNESDAY 20<sup>TH</sup> AUGUST  
1.30PM - 4.30PM  
TEEN SESSION  
AGES 10-15 YEARS**

Session run by MKPA and sponsored by  
Campbell Park Community Council  
All children must be accompanied by an adult throughout the session

**CPCC**  
Campbell Park Community Council



**Campbell Park  
Community Council**

**Pirate Park**

**Tuesday 29<sup>th</sup> July 1.30pm - 3.30pm**

**Messy, Mixed & Imaginative van**

**Messy Play**

**Dressing up**

**Arts & Crafts**

Session run by MKPA and sponsored by  
Campbell Park Community Council  
All children must be accompanied  
by an adult

**CPCC**  
Campbell Park Community Council



**CAMPBELL PARK COMMUNITY  
COUNCIL**

**SUMMER PLAY**

**OLDBROOK GREEN  
MK6 2HX**

**Thursday 14<sup>th</sup> August  
1.30pm - 3.30pm  
Sports & Games van**

**Sports**

**Obstacle Course**

**Large Games**

**Sports**

Session run by MKPA and sponsored by  
Campbell Park Community Council  
All children must be accompanied  
by an adult

**CPCC**  
Campbell Park Community Council

